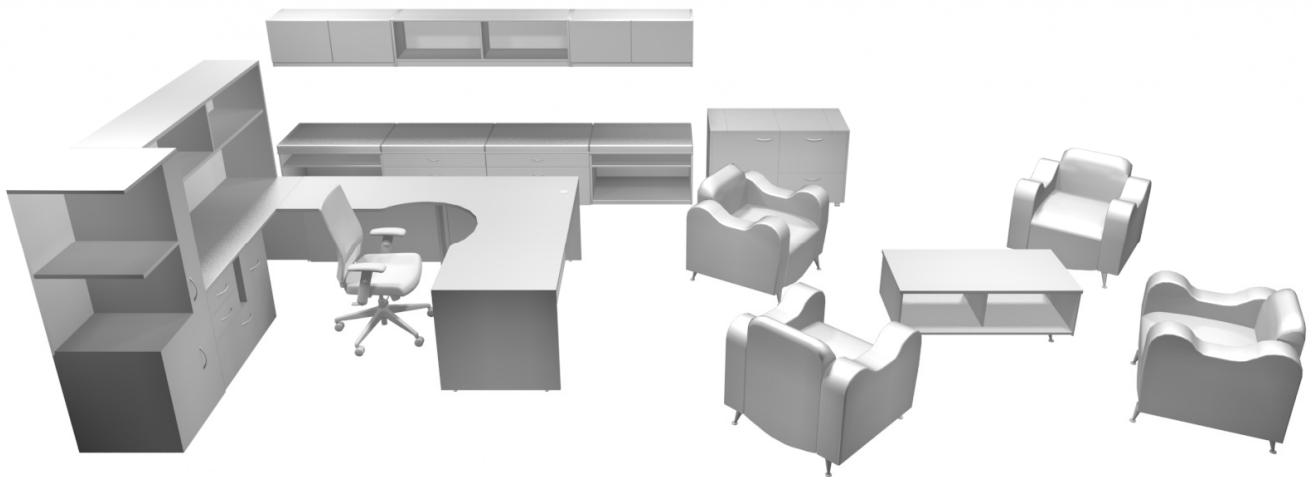
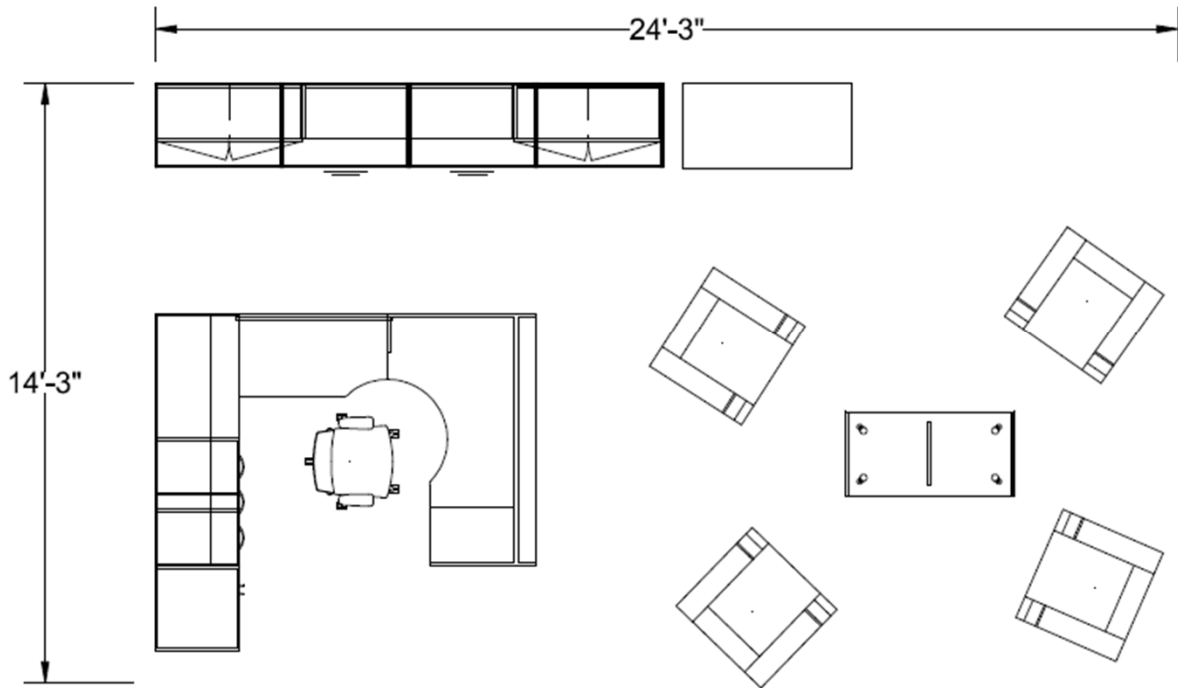




Product Configuration Details

Hyperwork Casegoods & Tables, ETC Office Seating, Claudia Lounge Seating
 Image: casegoods_contemporary_hyperwork_roomset_31_web.jpg

Qty.	Item #	Description	Upholstery	Finish
1	HWSL462R2BF	Hyperwork Right Asymmetrical Desk	N/A	Shoreline / Chrome
1	HWSL495L	Hyperwork Left Asymmetrical Bridge	N/A	Shoreline / Chrome
1	HWSL735L	Hyperwork Left Multi-File Credenza	N/A	Shoreline / Chrome
1	HWSL717	Hyperwork Open Overhead Storage	N/A	Shoreline
1	HWSL65TL	Hyperwork Left 3-in-1 Storage Tower	N/A	Shoreline / Chrome
2	HWSL36B-O	Hyperwork Open Bench Pedestal	N/A	Shoreline
2	HWSL36B-PDFD	Hyperwork Bench Pedestal	N/A	Shoreline / Chrome
4	H36	Seat Cushion for Bench Pedestal	CF Stinson Broadband Currant	N/A
1	HWSL2248	Hyperwork Mobile Server Credenza	N/A	Shoreline / Chrome
2	HSL42WMS	Hyperwork Enclosed Wall Mount	N/A	Shoreline
1	HSL60WM	Hyperwork Open Wall Mount	N/A	Shoreline
1	HWSLCT48	Hyperwork Coffee Table	N/A	Shoreline / Chrome
4	5301	Claudia Club Chair	CF Stinson Bryant Park Violet	N/A
1	461	ETC Mesh Midback Office Chair	CF Stinson Bryant Park Violet	Shoreline



It is the responsibility of the Dealer to verify dimensions, quantities, finishes and pricing. HPFI will not accept responsibility for any error in interpretation of the drawing, finishes or pricing and recommend thorough review. Please notify HPFI of any discrepancies. Renderings are for representation only. Actual items and finishes may vary from rendering.



1104 Bedford St., High Point, NC 27263
800-447-3462 www.hpfi.com

Roomset: casegoods_contemporary_hyperwork_roomset_31_web

Product: Claudia Lounge, Hyperwork Casegoods & Tables, ETC Seating

Date: 10-04-22

Drawn By: MC




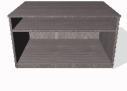


Scale: NTS



Product Details: Casegoods - Hyperwork - Roomset 31

4% Materials Surcharge on NET Effective 9-6-2021

Line #	Qty	Part Number	Part Description	List	Ext List
1	1		Price is based on Sept 1,2022 Price List, Zone 1	\$0.00	\$0.00
2	1	461_	ETC Mesh Mid Back Chair, Grade-in fabric seat	\$1,020.00	\$1,020.00
			<i>~</i> Assembly Option No Assembly (Std)		
			<i>,5</i> Fabric Grade Grade 5		
			<i>,6562</i> Grade 5 Fabrics CF Stinson: Bryant Park Violet		
3	4	5301	Claudia Club Chair	\$2,486.00	\$9,944.00
			<i>,5</i> Fabric Grade Grade 5		
			<i>,6562</i> Grade 5 Fabrics CF Stinson: Bryant Park Violet		
4	4	H36	Seat Cushion for Hyperwork 36.5x24 Storage Pedestals	\$912.00	\$3,648.00
			<i>,12/L</i> Fabric Grade Grade 12/L		
			<i>,64667</i> Grade 12 Fabrics CF Stinson: Broadband Currant		
5	1	H__2248	Mobile Server Credenza 48/72"x24"x29"	\$2,183.00	\$2,183.00
			<i>,HW</i> Hyperwork Pull Options Brushed Chrome		
			<i>,SS</i> Surface A Finishes Smooth Shoreline		
			<i>,SL</i> Surface B Finishes Shoreline (Textured)		
6	2	H__36B-PDFD	Pedestal with Project Drawer and One Lateral File Drawer 36.5"Wx24"Dx29"H	\$1,753.00	\$3,506.00
			<i>,HW</i> Hyperwork Pull Options Brushed Chrome		
			<i>,SS</i> Surface A Finishes Smooth Shoreline		
			<i>,SL</i> Surface B Finishes Shoreline (Textured)		
			<i>~</i> Heavy Drawer Bottom Option No Extra Thick Drawer Bottom		

Line #	Qty	Part Number	Part Description	List	Ext List
7	1	H__462R2BF	72"x42" Right Full Ped Curved Corner Desk- B/B/F	\$2,707.00	\$2,707.00
					
		,HW	Hyperwork Pull Options	Brushed Chrome	
		,SS	Surface A Finishes	Smooth Shoreline	
		,SL	Surface B Finishes	Shoreline (Textured)	
		~	Key Different Option	No Selection of Option	
8	1	H__65TL	3-in-1 Storage, Right Wardrobe 24"x24"x65.5"	\$2,141.00	\$2,141.00
					
		,HW	Hyperwork Pull Options	Brushed Chrome	
		,SS	Surface A Finishes	Smooth Shoreline	
		,SL	Surface B Finishes	Shoreline (Textured)	
9	1	H__735L	72"x24" Left MultiFile Credenza	\$2,071.00	\$2,071.00
					
		,HW	Hyperwork Pull Options	Brushed Chrome	
		,SS	Surface A Finishes	Smooth Shoreline	
		,SL	Surface B Finishes	Shoreline (Textured)	
		~	Heavy Drawer Bottom Option	No Extra Thick Drawer Bottom	
		~	Key Different Option	No Selection of Option	
10	2	HW_36B-O	Open Pedestal with 34.5"Wx22"Dx4.5"H Open Compartment in Top and 34.5"Wx22"Dx11.5"H Open Compartment Below	\$1,288.00	\$2,576.00
					
		,SS	Surface A Finishes	Smooth Shoreline	
		,SL	Surface B Finishes	Shoreline (Textured)	
11	1	HW_495L	42" Left Asym Bridge (19"R/24"L)	\$682.00	\$682.00
					
		,SS	Surface A Finishes	Smooth Shoreline	
		,SL	Surface B Finishes	Shoreline (Textured)	
12	1	HW_717	72" Open Overhead Storage Unit	\$1,706.00	\$1,706.00
					
		,SS	Surface A Finishes	Smooth Shoreline	
		,SL	Surface B Finishes	Shoreline (Textured)	
		,T	Task Light Option	Task Light Installed	

Line #	Qty	Part Number	Part Description	List	Ext List
13	2	H_42WMS	42" Wall Mount Cabinet, 2 Doors	\$1,212.00	\$2,424.00
		,SS	Surface A Finishes	Smooth Shoreline	
		,SL	Surface B Finishes	Shoreline (Textured)	
14	1	H_60WM	60" Wall Mount Cabinet, Open	\$1,302.00	\$1,302.00
		,SS	Surface A Finishes	Smooth Shoreline	
		,SL	Surface B Finishes	Shoreline (Textured)	
15	1	HW_CT48	Claudia 48"x24"x18" Coffee Table w/ Open Stg/Display Shelf	\$992.00	\$992.00
		,SS	Surface A Selection	Smooth Shoreline	
		,SL	Surface B Selection	Shoreline (Textured)	

It is the responsibility of the Authorized Dealer / Reseller to verify all dimensions, quantities, specifications including finishes, sizes, pricing and any adaptations prior to placing an order.

Total List: \$36,902.00

HPFi will not accept responsibilities for in error in interpretation of drawings, finishes or pricing.

Please notify HPFi of any discrepancies.

HPFi sells to authorized dealers and resellers of office furniture and only Authorized HPFi Dealers can place orders.

All HPFi products ship as follows: F.O.B. ORIGIN, HIGH POINT, NC - USA, FRIEGHT PREPAID which means that ownership and the resposibility of the merchandise becomes that of the buyer upon delivery to the frieght company.

Shipping is **dock-to-dock**, contact your customer service representative for special services that may be required.

Orders of less than 500lbs will be assessd a minimum freight of \$ 125.00 net per order.