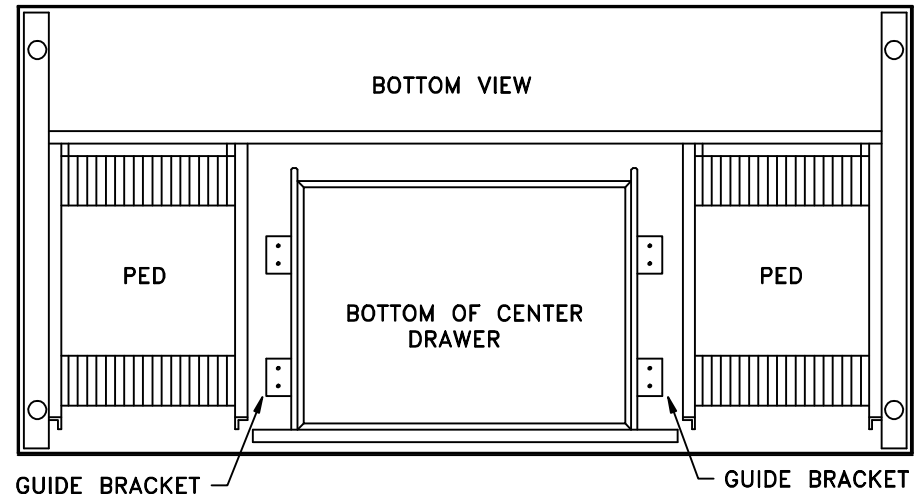
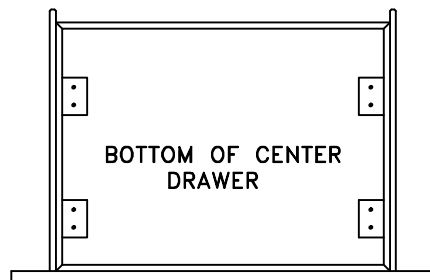
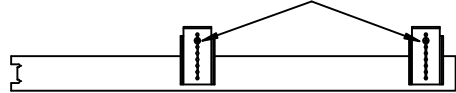


CENTER DRAWER INSTALLATION

- (1) FOR EASE OF INSTALLATION—REMOVE DRAWERS AND, TURN UNIT OVER ONTO A PROTECTED SURFACE.
- (2) POSITION CENTER DRAWER BETWEEN THE PEDS WITH, THE DRAWER FRONT 3/4" AWAY FROM FRONT OF PEDS. MAKE SURE GUIDES ARE IN CLOSED POSITION.
- (3) USING THE (4) #8 X 3/4" SCREWS PROVIDED, FASTEN DRAWER DOWN AT THE (4) BRACKET LOCATIONS SHOWN.
- (4) TURN UNIT UPRIGHT AND REINSTALL DRAWERS.
- (5) ADJUST DRAWER FOR ACCURATE FIT AND USE REMAINING #6 X 1/2" SCREWS TO SECURE.

NOTE!! IN CERTAIN APPLICATIONS THE BRACKETS MAY NEED TO BE REVERSED AS SHOWN!!

REMOVE SCREWS & REVERSE BRACKETS



KEYBOARD PULL OUT INSTALLATION

- (1) FOR EASE OF INSTALLATION—REMOVE DRAWERS AND, TURN UNIT OVER ONTO A PROTECTED SURFACE.
- (2) POSITION KEYBOARD BETWEEN THE PEDS WITH, THE KEYBOARD 1" AWAY FROM FRONT OF DESK TOP. MAKE SURE GUIDES ARE IN CLOSED POSITION.
- (3) USING THE (4) #8 X 3/4" SCREWS PROVIDED, FASTEN KEYBOARD DOWN AT THE (4) BRACKET LOCATIONS SHOWN.
- (4) TURN UNIT UPRIGHT AND REINSTALL DRAWERS.

