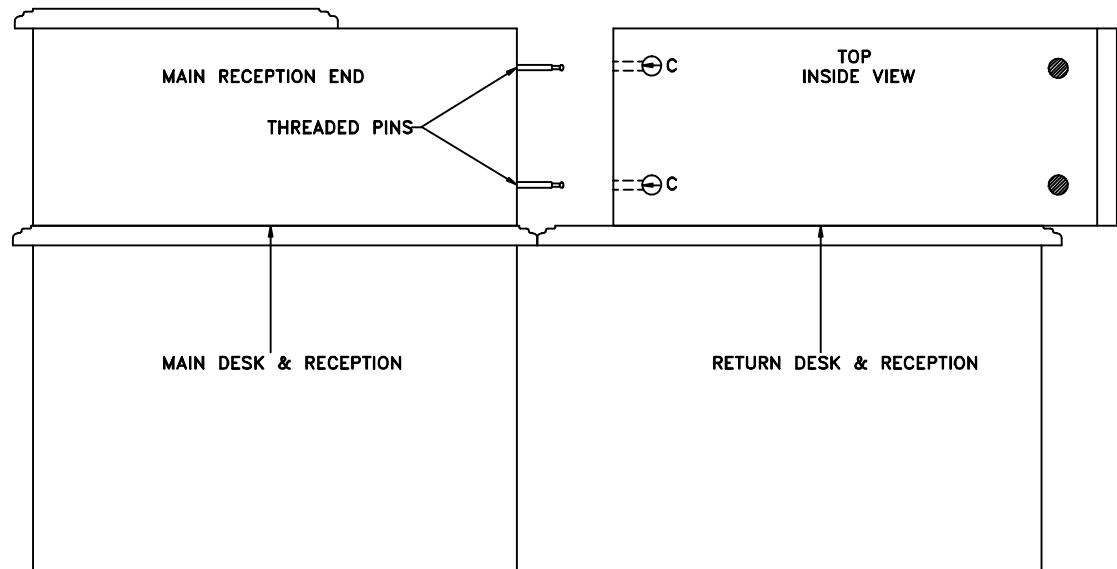
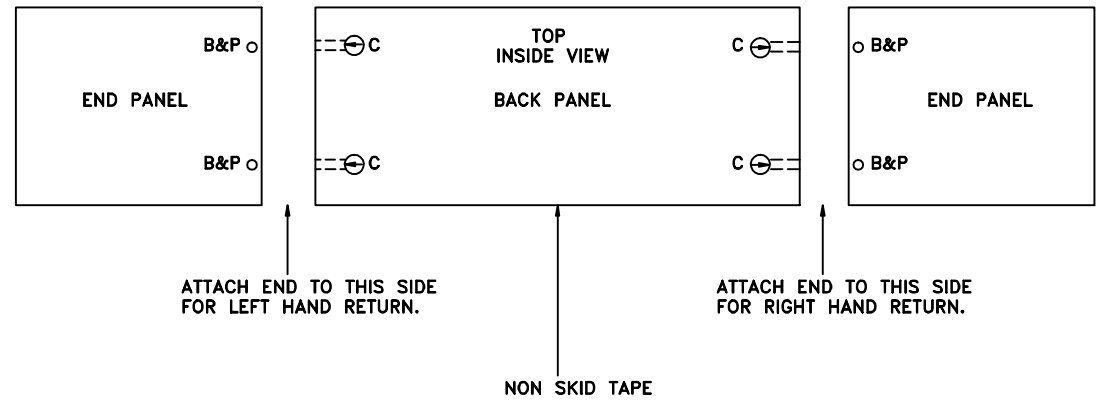


(RETURN RECEPTION SCREEN) ASSEMBLY INSTRUCTION SHEET

TOOLS NEEDED; HAMMER AND PHILLIPS OR FLAT SCREW DRIVER.
LETTER CODES -C=CAM , B&P=BUSHING & PIN.

- (1) LAY END DOWN ON FLAT SURFACE AS SHOWN, THEN TAP BRASS BUSHINGS INTO THE (2) 5MM HOLES CODED B&P.
- (2) SCREW THREADED PINS INTO BRASS BUSHINGS CODED B&P, WITH SCREW DRIVER, CAREFUL NOT TO OVER TIGHTEN.
- (3) PRESS CAMS INTO ALL OTHER 15MM HOLES LETTER CODED (C) WITH, ARROW POINTED TOWARD HOLE BORED FOR PIN TO COME THROUGH.
- (4) PLACE BACK ONTO END AND LOCK THE (2) CAMS IN PLACE, CLOCKWISE.
- (5) PEEL & PLACE NON SKID TAPE ALONG BOTTOM OF UNIT.
- (6) NEXT SCREW THE (2) THREADED PINS PROVIDED INTO BRASS BUSHINGS ON, THE MAIN RECEPTION END PANEL IF USED. SEE ILLUSTRATION TO THE RIGHT.
- (7) NEXT PLACE UNIT ON TOP OF RETURN & ALIGN CAMS WITH PINS ON, THE MAIN UNIT IF USED. LOCK THE (2) CAMS IN PLACE, CLOCKWISE.
- (8) THE UNIT SHOULD NOW BE ASSEMBLED.
- (9) INSERT THE (4) BLACK PLASTIC COVERS INTO CAMS.



h
HPFI
www.HPFI.com